



Earn BISSELL Rewards!

Register your product today!

See details on back page

ZING[®]

USER'S GUIDE
6489 SERIES

- 2 Thank You
- 3 Safety Instructions
- 4 Product View
- 5 Assembly
- 6-7 Operations
- 8-12 Maintenance and Care
- 13 Troubleshooting
- 14 Replacement Parts
- 14 Accessories
- 15 Warranty
- 16 Product Registration
- 16 Consumer Care



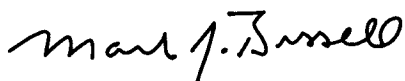
Thanks for buying a BISSELL Vacuum

We're glad you purchased a BISSELL vacuum. Everything we know about floor care went into the design and construction of this complete, high-tech home cleaning system.

Your BISSELL Zing canister vacuum is well made, and we back it with a limited one year warranty. We also stand behind it with a knowledgeable, dedicated Consumer Care department, so, should you ever have a problem, you'll receive fast, considerate assistance.

My great-grandfather invented the floor sweeper in 1876. Today, BISSELL is a global leader in the design, manufacture, and service of high quality homecare products like your BISSELL Zing canister vacuum.

Thanks again, from all of us at BISSELL.



Mark J. Bissell
Chairman & CEO

IMPORTANT SAFETY INSTRUCTIONS

When using an electrical appliance, basic precautions should be observed, including the following:

READ ALL INSTRUCTIONS BEFORE USING YOUR CANISTER VACUUM.

Always connect to a polarized outlet (left slot is wider than right). Unplug from outlet when not in use and before conducting maintenance.

WARNING: To reduce the risk of fire, electric shock, or injury:

- Unplug from outlet when not in use and before servicing.
- Do not use with damaged cord or plug.
- To unplug, grasp plug, not cord.
- Do not pull or carry by cord, use cord as a handle, close door on cord, pull cord around sharp corners, run cleaner over cord, or expose cord to heated surfaces.
- Hold plug when rewinding the cord onto the reel. Do not allow the plug to whip when rewinding.
- Do not use cleaner if it has been dropped, damaged, left outdoors or dropped into water. Have it repaired at an Authorized Service Center.
- Do not allow children to use as a toy.
- Do not use outdoors or on wet surfaces.
- Do not handle cleaner or plug with wet hands.
- Do not put any object into openings, use with blocked opening, or restrict air flow.
- Do not use without dust bag and/or filters in place.
- Do not allow hair, loose clothing, fingers or body parts to get near openings or floor brush in the appliance.
- Do not pick up hot coals, cigarette butts, matches or any hot, smoking, or burning objects.
- Do not pick up hard or sharp objects such as glass, nails, screws, coins, etc.

- Do not pick up flammable or combustible materials (lighter fluid, gasoline, kerosene, etc.) or use in the presence of explosive liquids or vapor.
- Do not unplug by pulling on cord
- Do not pick up toxic material (chlorine bleach, ammonia, drain cleaner, etc.).
- Do not use in an enclosed space filled with vapors given off by oil base paint, paint thinner, some moth proofing substances, flammable dust, or other explosive or toxic vapors.
- Do not use for any purpose other than described in this User's Guide.
- Always turn off this appliance before connecting or disconnecting vacuum hose.
- Use only manufacturer's recommended attachments.
- Use only on dry, indoor surfaces.
- Keep openings free of dust, lint, hair, etc.
- Keep appliance on a level surface.
- Turn off all controls before plugging in or unplugging cleaner.
- Be extra careful when cleaning stairs.
- Close attention is necessary when used by or near children.

SAVE THESE INSTRUCTIONS FOR FUTURE USE

THIS APPLIANCE HAS A POLARIZED PLUG.

To reduce the risk of electric shock, this appliance has a polarized plug (one blade is wider than the other). This plug will fit in a polarized outlet only one way. If the plug does not fit fully in the outlet, reverse the plug. If it still does not fit, contact a qualified electrician to install a proper outlet. Do not change the plug in any way.

This model is for household use only.

Product view



Combination Crevice
Tool/Dusting Brush

WARNING:

Do not plug in your vacuum until you are familiar with all instructions and operating procedures.

Assembly

1. Connect hose to vacuum by inserting hose connector on the end of the hose into the suction inlet. Make sure the hose is positioned so the tabs on the hose connector line up with the notches on the suction inlet. Once inserted into the suction inlet, turn clockwise to lock into place.
2. Attach extension wands section together by inserting into one another and twisting slightly to tighten.
3. Connect hose handle to the end of the extension wand and twist slightly to tighten.
4. Connect floor nozzle to the end of the extension wand and twist slightly to tighten.
5. Once assembled, you can store your vacuum by inserting the storage clip (located on the back of the floor nozzle) into the storage slot on the rear of the vacuum.



1. Suction Inlet



2.



3.



4.



5.



Operations

Power cord

The power cord is located at the rear of the vacuum. Gently pull out the power cord, watching for the yellow line. Stop pulling the power cord once the yellow line is visible. There is also a red line, which indicates the end of the usable cord. Do not pull the power cord out beyond the red line.

Automatic cord rewind

Your vacuum is equipped with an automatic cord rewind. When cleaning is finished, press the power button OFF and grasp the plug to disconnect from the electrical outlet. Hold the plug and press the automatic cord rewind button to rewind the cord automatically.

Power button

Turn the power ON or OFF by pressing lightly downward on the power button (ⓘ).



CAUTION:

Be careful to avoid injury as cord retracts very quickly.

Power Button



CAUTION:

Before using your vacuum, make sure that the dirt cup and all filters are in place. Do not operate your vacuum without the dirt cup and filters.

NOTICE:

While vacuuming, certain types of carpets and low humidity conditions may generate small static discharges. The discharges are entirely harmless and are not associated in any way with the main power supply.

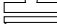

Operations

Special tools

Your **BISSELL Zing Canister** is not only a powerful carpet and rug vacuum cleaner, it's also a versatile bare floor and above floor vacuum cleaner when you select one of the special tools.

Floor nozzle

Use to vacuum carpets, rugs and bare floors. Swivel head turns to get into tight spaces and fits under cabinets.

1. To vacuum carpets and rugs, push the brush switch to the carpet position . This will pull the brushes up into the floor nozzle.
2. To vacuum bare floors, push the brush switch to the bare floor position . This will extend the brushes down from the floor nozzle.

Combination crevice tool/ dusting brush

Use the crevice tool in tight, narrow spaces. Use the dusting brush to clean curtains, draperies, cushions and fabrics.

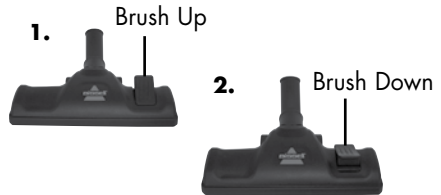
Air flow regulator

Open the air flow regulator by sliding the regulator down towards the extension wand to an open position. This will reduce the suction power for vacuuming delicate fabrics.

For full suction power, close the air flow regulator by sliding the regulator up to the closed position.

Tip:

Before cleaning under low furniture, check area first for objects that might harm the unit or block the hose.



Tip:

Use the air flow regulator to reduce air flow as needed when using the tools.

Tip:

Hair, string and small objects can block the hose and tools. Check them occasionally for obstructions.

Maintenance and care

Emptying the dirt cup

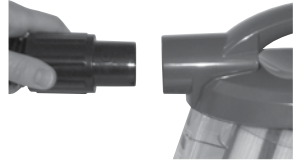
Empty the dirt cup as soon as the dirt reaches the "FULL" lines on the sides of the dirt cup.

1. Unplug the vacuum from the electrical outlet.
2. Remove the hose by turning the hose connector counter clockwise and pulling it out from the suction inlet. Set hose aside.
3. Press the dirt cup release button on the carry handle and lift up to remove the dirt cup.
4. Choose an emptying method. Method #2 is recommended for allergy sufferers.
Method #1 – Hold the dirt cup over a trash can and push the emptying button to open the bottom. Close the bottom after the dirt empties.
Method #2 – Place a plastic bag over the bottom of the dirt cup. Push the emptying button through the plastic to open the bottom. After the dust settles, close the bottom and remove the bag to discard.
5. Replace the dirt cup by placing it back into the vacuum and pushing down on the carry handle until it snaps back into place.

WARNING:

To reduce the risk of electric shock, turn power switch OFF and disconnect plug from electrical outlet before performing maintenance or troubleshooting checks.

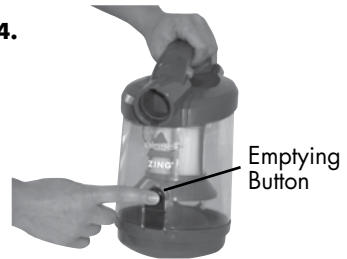
2.



3.



4.



Maintenance and care

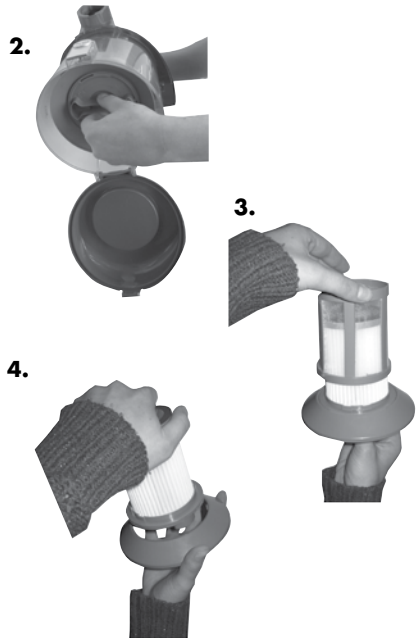
Cleaning the dirt cup filters

Use only BISSELL replacement filters in your Zing Canister.

1. Unplug the vacuum from the electrical outlet.
2. The dirt cup filters can be reached by removing the dirt cup from the vacuum, grasping the handle on the bottom of the dirt cup filter assembly and turning counter clockwise to unlock. Pull straight down to remove.
3. Remove the dirt cup filter screen by grasping the bottom of the filter frame base and pulling straight up.
4. Remove the dirt cup filter by grasping the bottom of the filter frame base and turning the dirt cup filter counter clockwise and pulling straight up.
5. The dirt cup filter screen and dirt cup filter can be hand washed in cold water with a mild detergent. Rinse well and air dry completely before placing back onto the filter frame base.

WARNING:

To reduce the risk of electric shock, turn power switch OFF and disconnect plug from electrical outlet before performing maintenance or troubleshooting checks.



Maintenance and care

Cleaning the dirt cup filters (cont)

6. Attach the dirt cup filter back onto the filter frame base by lining up the tabs on the filter base with the notches on the dirt cup filter and turning clockwise to lock back into place.
7. Attach the dirt cup filter screen back on to the dirt cup filter by sliding it down over the dirt cup filter, making sure that the tabs on the bottom of the dirt cup filter screen line up with the notches on the dirt cup filter.
8. Insert the dirt cup filter assembly back into the dirt cup by lining up the tabs on the top of the dirt cup filter assembly with the notches inside the top of the dirt cup and turning the handle on the bottom of the dirt cup filter assembly clockwise to lock into place.

Maintenance and care

Replacing the post-motor filter

The post-motor filter assists in the filtration process to return cleaner air to the room. Use only BISSELL replacement filters in your Zing Canister.

1. Unplug the vacuum from electrical outlet.
2. Remove the filter door (located on the back of the vacuum) by pushing down on the tab and pulling out and away from the vacuum.
3. The post-motor filter can be hand washed in cold water with a mild detergent. Rinse well and air dry completely before placing back into the vacuum.
4. Replace the filter door by placing the tabs on the bottom of the filter door into the notches on the bottom of the post-motor filter compartment and pushing the tab forward back into the vacuum to lock into place.



WARNING:

Do not operate cleaner with damp or wet filters or without all filters in place.



Maintenance and care

Clearing clogs from the dirt cup

- 1.** Unplug the vacuum from electrical outlet.
- 2.** Remove the dirt cup from the vacuum, following steps 1-3 of the "Emptying the dirt cup" instructions on page 8.
- 3.** Remove the dirt cup filter assembly from the dirt cup, following step 2 of the "Clean the dirt cup filter" instructions on page 9.
- 4.** Tap the dirt cup filter assembly over a garbage container to remove any dirt or debris from the dirt cup filter screen that surrounds the dirt cup filter.
- 5.** Reach up into the dirt cup to clear any dirt or debris from the dirt cup.
- 6.** Check to see if there are any clogs in the suction inlet.
- 7.** After clearing any dirt or debris from the dirt cup, replace the dirt cup filter assembly back in the dirt cup following step 8 of the "Cleaning the dirt cup filter" instructions on page 9.

Troubleshooting



WARNING:

To reduce the risk of electric shock, turn power OFF and disconnect plug from electrical outlet before performing maintenance or troubleshooting.

Vacuum cleaner won't run

Possible causes

1. Vacuum cleaner is not plugged in
2. Power button is not pressed down

Remedies

1. Check electrical plug
2. Press power button down

Vacuum cleaner won't pick up or low suction

Possible causes

1. Tools, hose and/or extension wands are blocked
2. Filters are dirty
3. Dirt cup is full
4. Hose connector not securely attached to suction inlet
5. Crack or hole in hose
6. Air flow regulator is set to open or minimum setting
7. Clog in the dirt cup

Remedies

1. Remove each part and check for blockages
2. Check and clean or replace all filters
3. Empty dirt cup
4. Make sure hose connector is locked into suction inlet
5. Check hose and replace if needed
6. Change to closed or maximum setting
7. Clear clog from dirt cup following instructions on page 12

Visible dust escaping from vacuum

Possible causes

1. Dirt cup is full
2. Filters missing or installed incorrectly
3. Filters are dirty
4. Hose is blocked
5. Hose connector not securely attached to suction inlet
6. Crack or hole in hose
7. Dirt cup is open

Remedies

1. Empty dirt cup
2. Check all filters for correct installation
3. Check and clean or replace all filters
4. Remove hose and check for blockages
5. Make sure hose connector is locked into suction inlet
6. Check hose and replace if needed
7. Follow Emptying the dirt cup instructions step(s) (1-5) on page 8

Other maintenance or service not included in the manual should be performed by an authorized service representative.

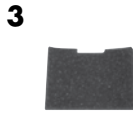
Thank you for selecting a BISSELL product.

Please do not return this product to the store.

For any questions or concerns, BISSELL is happy to be of service. Contact us directly at 1-800-237-7691.

Replacement parts - BISSELL vacuum

Item	Part No.	Part Name
1	203-1771	Dirt Cup Filter Screen
2	203-1772	Dirt Cup Filter Assembly
3	203-1786	Post-Motor Filter
4	203-1792	Hose with Handle
5	203-1783	Dust Tank Blue 280U
6	203-1780	Bottom Lid Dust Tank Blue 280U



Accessories

Item	Part No.	Part Name
1	203-1773	Floor Nozzle
2	203-1538	Extension Wands (2)
3	203-1539	Combination Crevice Tool/Dusting Brush



Warranty - BISSELL Zing® Canister Vacuum

This warranty gives you specific legal rights, and you may also have other rights which may vary from state to state. If you need additional instruction regarding this warranty or have questions regarding what it may cover, please contact BISSELL Consumer Care by E-mail, telephone, or regular mail as described below.

Limited One Year Warranty

Subject to the *EXCEPTIONS AND EXCLUSIONS identified below, upon receipt of the product BISSELL will repair or replace (with new or remanufactured components or products), at BISSELL's option, free of charge from the date of purchase by the original purchaser, for one year any defective or malfunctioning part.

See information below on "If your BISSELL product should require service".

This warranty applies to product used for personal, and not commercial or rental service. This warranty does not apply to fans or routine maintenance components such as filters, belts, or brushes. Damage or malfunction caused by negligence, abuse, neglect, unauthorized repair, or any other use not in accordance with the User's Guide is not covered.

If your BISSELL product should require service:

Contact BISSELL Consumer Care to locate a BISSELL Authorized Service Center in your area.

If you need information about repairs or replacement parts, or if you have questions about your warranty, contact BISSELL Consumer Care.

Website or E-mail:

www.bissell.com

Use the "Customer Care" tab.

Or Call:

BISSELL Consumer Care

1-800-237-7691

Monday - Friday 8 am - 10 pm ET

Saturday 9 am - 8 pm ET

Or Write:

BISSELL Homecare, Inc.

PO Box 3606

Grand Rapids, MI 49501

ATTN: Consumer Care

BISSELL IS NOT LIABLE FOR INCIDENTAL OR CONSEQUENTIAL DAMAGES OF ANY NATURE ASSOCIATED WITH THE USE OF THIS PRODUCT. BISSELL'S LIABILITY WILL NOT EXCEED THE PURCHASE PRICE OF THE PRODUCT.

Some states do not allow the exclusion or limitation of incidental or consequential damages, so the above limitation or exclusion may not apply to you.

*EXCEPTIONS AND EXCLUSIONS FROM THE TERMS OF THE LIMITED WARRANTY

THIS WARRANTY IS EXCLUSIVE AND IN LIEU OF ANY OTHER WARRANTIES EITHER ORAL OR WRITTEN. ANY IMPLIED WARRANTIES WHICH MAY ARISE BY OPERATION OF LAW, INCLUDING THE IMPLIED WARRANTIES OF MERCHANTABILITY AND FITNESS FOR A PARTICULAR PURPOSE, ARE LIMITED TO THE ONE YEAR DURATION FROM THE DATE OF PURCHASE AS DESCRIBED ABOVE.

Some states do not allow limitations on how long an implied warranty last so the above limitation may not apply to you.



Don't forget to register your product!

Registering is quick, easy and offers you benefits over the lifetime of your product. You'll receive:

BISSELL Rewards Points

Automatically earn points for discounts and free shipping on future purchases.

Faster Service

Supplying your information now saves you time should you need to contact us with questions regarding your product.

Product Support Reminders and Alerts

We'll contact you with any important product maintenance reminders and alerts.

Special Promotions

Optional: Register your email to receive notice of offers, contests, cleaning tips and more!

Visit www.bissell.com/registration now!



BISSELL Consumer Care

For information about repairs or replacement parts, or questions about your warranty, call:

BISSELL Consumer Care

1-800-237-7691

Monday - Friday 8 am — 10 pm ET

Saturday 9 am — 8 pm ET

Or write:

BISSELL Homecare, Inc.

PO Box 3606

Grand Rapids MI 49501

ATTN: Consumer Care

Or visit the BISSELL website - **www.bissell.com**

When contacting BISSELL, have model number of cleaner available.

Please record your Model Number: _____

Please record your Purchase Date: _____

NOTE: Please keep your original sales receipt. It provides proof of purchase date in the event of a warranty claim. See Warranty on page 15 for details.



©2012 BISSELL Homecare, Inc.
Grand Rapids, Michigan
All rights reserved. Printed in China
Part Number 110-4565
Rev 4/12
Visit our website at:
www.bissell.com

